

Osechi Ryori Essentials

Made in Japan.

Phone Orders Welcome.
Reach us at (808)286-9964 or iidashonolulu@gmail.com
We do Shipping. Free Expert Packing.
Prices Subject to Change.



New Year Sake Otoso Set
Lacquer
Tsuru Design
#TS-852 Small
\$47.95
#32-5911 Large
\$89.00



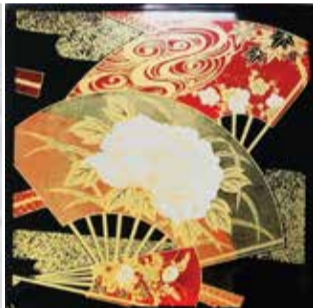
#34-5403 Jubako (3-tier)
Fans on Red
Lacquer, Black Inside
6.5"H, 7.5"x8"W
\$69.00

(Cover)



#288-130 Jubako (2-tier)
Songbird and Sakura on Beige/Gold/Pink
Lacquer, Black Inside
4.75"H, 7.75"x7.75"
\$49.75

(Cover)



#288-121 Jubako (2-tier)
Floral Fans on Black
Lacquer, Black Inside
4"H, 7"x7"
\$40.75

(Cover)



Five-Pointed Star

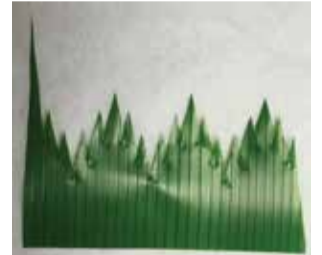
Chrysanthemum

Ume

Sakura



#EC12/C Tiger Design Training Chopsticks
9"L, Detachable
Made in China
\$4.45 pair



Baran
Plastic
69 cents per packet (50 sheets)



Sho-Chiku-Bai with kanji "Kotobuki" or Long Life
Plastic
3.5"L, 3"W
59 cents each



Ume, Sakura, Five-Pointed Star and Chrysanthemum (4-1)
Stainless Steel.
Each: 1.25"H, 1"W
\$4.95 per set



Ume and Sakura in 2 sizes (4-1)
Stainless Steel.
Large: 1.25"H, 1.38"W
Small: 1.25"H, 1"W
\$4.95 per set



Sho-Chiku-Bai Twig
Plastic
3.5"L, 3"W
59 cents each



Sho-Chiku-Bai with Tsuru
Plastic
3.5"L, 3"W
59 cents each

#132 Ume, Sakura, Five-Pointed Star and Chrysanthemum (4-1)
Stainless Steel.
Each: 2.25"H, 1.38"W
\$15.95 per set



#134 Ume, Sakura, Five-Pointed Star and Chrysanthemum (4-1)
Stainless Steel.
Each: 1.75"H, 0.88"W
\$11.20 per set



Pink Bowl with White Flowers, M
#SSP-4566
Porcelain
**Perfect Size for Ozoni Soup*
2.75"H, 5.25"Dia.
\$8.95 each



Blue Bowl with White Flowers, M
#SSY-4566
Porcelain
**Perfect Size for Ozoni Soup*
2.75"H, 5.25"Dia.
\$8.95 each



Stainless Steel Kanten or Yokan Cutter
7" Long, 1" Wide
\$18.50