

# Bonsai Pots

Made in Japan.

Phone Orders Welcome.  
Reach us at (808)286-9964 or [iidashonolulu@gmail.com](mailto:iidashonolulu@gmail.com)  
We do Shipping. Free Expert Packing.  
Prices Subject to Change.



**Blue Rectangular Namako  
#19-14-Large**  
2.25"H, 6.25"L, 5"W  
\$18.50



**Blue Rectangular Namako  
#19-14-Medium**  
2"H, 5.5"L, 4"W  
\$13.95  
Limited Quantity:1



**Blue Rectangular Namako  
#19-10-Large**  
2.25"H, 6"L, 5"W  
\$20.95



**Blue Mokko Namako  
#19-18-Large**  
2.75"H, 6.5"L, 5.5"W  
\$23.50  
**#19-18-Small**  
2.5"H, 5.75"L, 4.75"W  
\$16.25



**Cream Rectangle  
#19-15-Large**  
2.25"H, 6.25"L, 4.75"W  
\$18.50



**Cream Rectangle  
#19-15-Medium**  
2"H, 5.5"L, 4"W  
\$13.95  
**#19-15-S**  
2"H, 4.5"L, 3"W  
\$9.25



**Cream Rectangle  
#19-11-Large**  
2.25"H, 6"L, 5"W  
\$20.95  
**#19-11-S**  
2"H, 5"L, 3.5"W  
\$10.95



**Cream Mokko  
#19-19-Large**  
2.5"H, 6.25"L, 5.5"W  
\$23.50  
**#19-19-S**  
2.5"H, 5.5"L, 4.5"W  
\$16.25



**Green Rectangular Oribe  
#19-16-Medium**  
2"H, 5.5"L, 4"W  
\$13.95



**Green Rectangular Oribe  
#19-12-Large**  
2.25"H, 6"L, 5"W  
\$20.95



**Green Mokko Oribe  
#19-20-Large**  
2.75"H, 6.5"L, 5.5"W  
\$23.50



**Blue Square Namako  
#18-24-Large**  
3.5"H, 5"L, 5"W  
\$57.75



**Blue Square Namako  
#18-24-Medium**  
3"H, 4.75"L, 4.75"W  
\$38.95



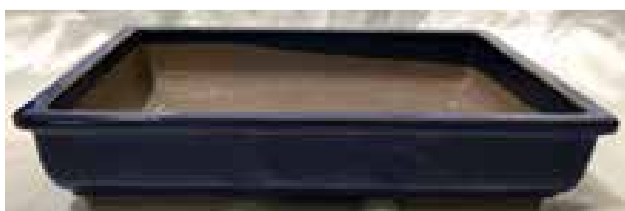
**Blue Square Namako  
#18-24-Small**  
2.5"H, 3.5"L, 3.5"W  
\$19.25



**Blue Oval Namako  
#19-7-Medium**  
1.25"H, 4.5"L, 3.25"W  
\$12.45



**Blue Oval Namako  
#19-7-Small**  
1"H, 3.75"L, 2.5"W  
\$6.25



**Blue Rect. Namako  
#31-5, 12go**  
2.75"H, 14.25"L, 9.5"W  
\$79.00  
Limited Quantity:1



**Oval Planter Udei  
#36-3**  
2"H, 12"L, 9"W  
\$51.00



**Water Tray  
#3818-2**  
1"H, 11"L, 8"W  
\$28.55  
Limited Quantity:1