

Stationery and Envelopes Sets

Made in California.
Each set has 10 sheets of stationery and 5 matching envelopes.
Made from bark of mulberry tree branches.
Environmentally safe and fully biodegradable.
Laser and Inkjet Compatible.

Phone Orders Welcome.
Reach us at (808)286.9964 or iidashonolulu@gmail.com
We do Shipping. Free Expert Packing



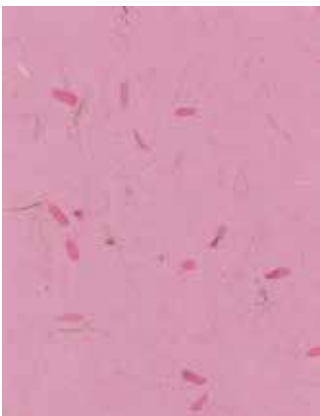
#ST-1954 Daisy

Sheet: 8.5"W, 11"L
Pointed Flap Envelope: 4"W, 9.25"L
\$9.95 per set



#ST-1654 Daisy

Sheet: 9"L, 6.25"W
Square Flap Envelope: 4.75"W, 6.5"L
\$7.95 per set



#ST-1953 Pink

Each Sheet: 8.5"W, 11"L
Each Pointed Flap Envelope: 4"W, 9.25"L
\$9.95 per set



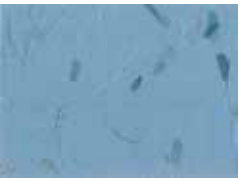
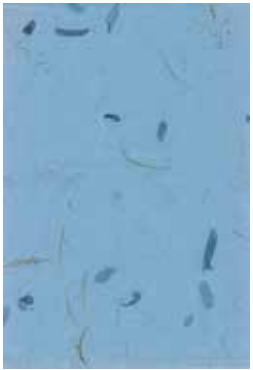
#ST-1653 Pink

Each Sheet: 9"L, 6.25"W
Each Square Flap Envelope: 4.75"W, 6.5"L
\$7.95 per set



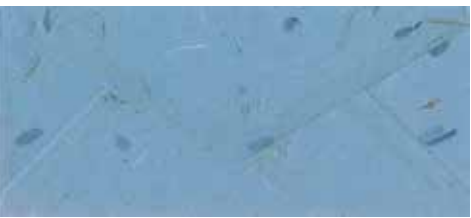
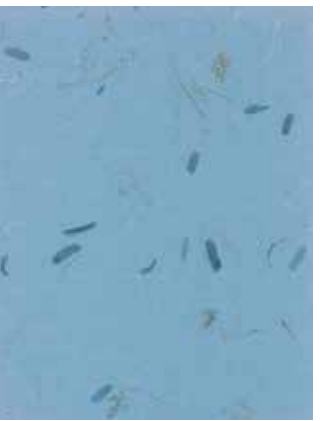
#ST-1952 Citron

Each Sheet: 8.5"W, 11"L
Each Pointed Flap Envelope: 4"W, 9.25"L
\$9.95 per set



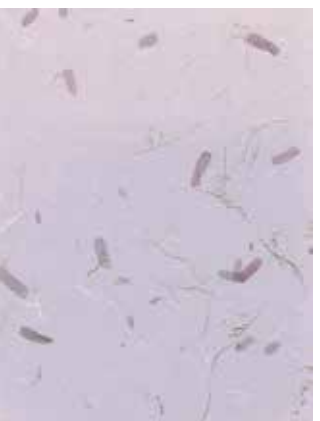
#ST-1655 Bluebell

Sheet: 9"L, 6.25"W
Square Flap Envelope: 4.75"W, 6.5"L
\$7.95 per set



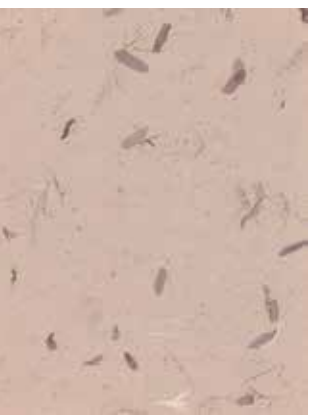
#ST-1955 Bluebell

Sheet: 8.5"W, 11"L
Pointed Flap Envelope: 4"W, 9.25"L
\$9.95 per set



#ST-1957 Lavender

Sheet: 8.5"W, 11"L
Pointed Flap Envelope: 4"W, 9.25"L
\$9.95 per set



#ST-1956 Natural

Sheet: 8.5"W, 11"L
Pointed Flap Envelope: 4"W, 9.25"L
\$9.95 per set